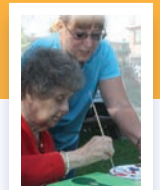
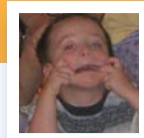
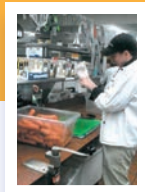
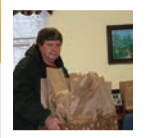


Monadnock United Way

ANNUAL REPORT

2014



MISSION STATEMENT:

MONADNOCK UNITED WAY is dedicated to improving lives by mobilizing diverse partners and investing in programs and people to create long-lasting measurable change.

This is done through the following objectives:

- Evaluate the extent and priority of regional human service needs
- Develop financial and non-monetary resources to meet those needs to the extent feasible
- Allocate these resources effectively
- Foster the spirit of volunteerism
- Facilitate community initiatives and problem solving
- Promote public awareness and understanding through education and communication
- Plan and provide for the community and evolution of the organization



MESSAGE FROM THE BOARD CHAIR

This past year, 2014, has been an exciting one for Monadnock United Way (MUW) and the people and agencies that it supports. And none of it could have happened without the staff, the donors, the board of directors, and the hundreds of volunteers who serve the community and ultimately those most in need in our community through the United Way. Let me first thank all of you for making our community better through your efforts.

MUW's mission is "dedicated to improving lives by mobilizing diverse partners and investing in programs and people to create long-lasting measurable change". MUW and its mission is so much more than an annual campaign to raise money to fund 49 programs through 26 human service agencies. It is also about MUW sponsored Days of Caring that were established to promote the spirit and value of volunteerism and demonstrate what people working together for the community's good can accomplish. It's about the work of a dedicated group of volunteer community members investing 50+ hours of their time to understand the needs of the member agencies, ultimately making recommendations on how to allocate the volunteer dollars donated to the annual campaign. It is about MUW working with both partner and non-partner agencies in a collaborative way to apply the community's precious resources to the most pressing human services needs in order to achieve the long lasting measurable change embodied in our Mission Statement.

As another example of MUW's role as a neutral convener and facilitator, near the end of 2014, Impact Monadnock (a local non-profit organization focused on using a collective impact approach to achieve meaningful and sustainable social change), selected MUW in partnership and Spark NH to lead a comprehensive early childhood initiative in the Monadnock Region to prepare young children for academic, career and life success. MUW and Spark NH's role as the backbone organization for this initiative clearly aligns with and reinforces the MUW's mission.

While we have had a number of "successes" and have been able to improve the lives of those most in need, it is becoming harder and harder to raise the money necessary to do this via our annual campaign. The campaign reached its conclusion at 96% of goal. However, with an unexpected bequest of \$52,000 and the board's decision to pull money from our restricted funds, agencies will receive 100% of their allocation for 2015! With the region having not fully emerged from the economic downturn of 2008/09 and with the changes in ownership/management of many of the larger corporations in our region, the future campaigns will be similarly challenged. Our restricted funds have been depleted throughout the economic downturn, and we cannot continue this trend. But, I cannot think of a better community, a more dedicated staff, and a more engaged board to meet the challenges as we look to expand our donor base, explore alternative funding options, and more effectively allocate the money that has been entrusted to us.

As I conclude this letter, on behalf of the board and the staff, I'd like to repeat my thanks to not only the volunteers and the donors, who facilitate MUW's mission, but also the agencies that provided the services to those in critical need. Your support and dedication to all of the vital human services programs that we fund is truly appreciated. Working together, we can continue to build a stronger, healthier community that will make the Monadnock Region a better place to live, to work, and to raise a family. Together we are making a difference as we LIVE UNITED!

Very truly yours,

Joe Parisi, 2014 Monadnock United Way Board Chair

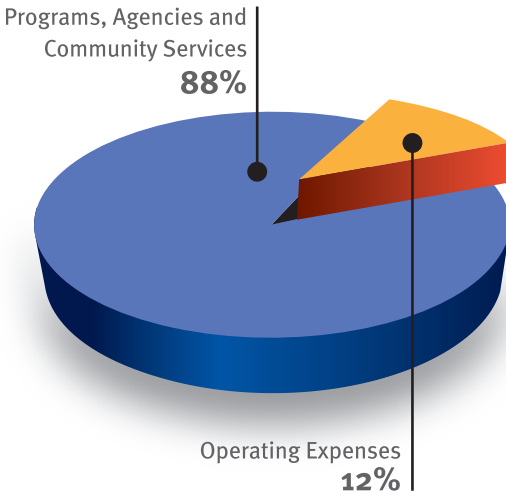
STATEMENT OF FINANCIAL POSITION (unaudited)

Year Ended December 31, 2014 and 2013

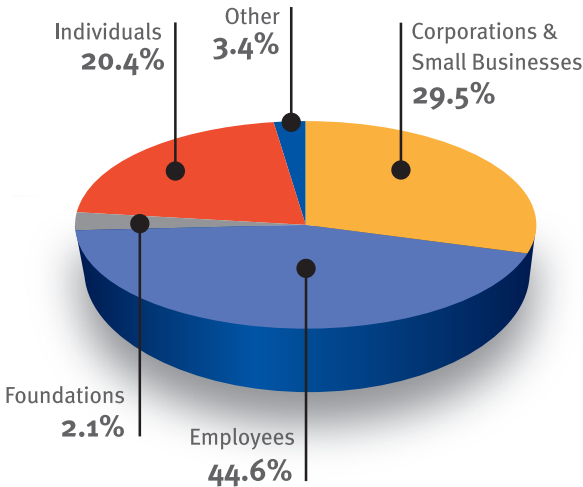
	<u>2014</u>	<u>2013</u>
ASSETS		
CURRENT ASSETS:		
Cash	\$ 304,790	\$ 168,187
Marketable securities	1,386,277	1,458,270
Pledges receivable, less allowance for uncollectible pledges of \$75,000 in 2014 and 2013	859,303	980,734
Other current assets	<u>1,459</u>	<u>4,408</u>
Total current assets	<u>2,551,829</u>	<u>2,611,599</u>
PROPERTY, PLANT AND EQUIPMENT, at cost:		
Land	4,430	4,430
Building and improvements	99,764	99,764
Office furniture and equipment	<u>73,552</u>	<u>70,286</u>
	177,746	174,480
Less—Accumulated depreciation	<u>159,726</u>	<u>156,087</u>
	<u>18,020</u>	<u>18,393</u>
OTHER ASSETS:		
Beneficial interest in foundation assets	<u>\$ 272,423</u>	<u>\$ 269,162</u>
TOTAL ASSETS	<u>\$ 2,842,272</u>	<u>\$ 2,899,154</u>
LIABILITIES AND NET ASSETS		
CURRENT LIABILITIES:		
Unpaid allocations to agencies	\$ 20,347	\$ 22,048
Accrued expenses	<u>17,336</u>	<u>12,024</u>
Total current liabilities	<u>37,683</u>	<u>34,072</u>
NET ASSETS:		
Unrestricted		
Board designated	637,422	637,422
Undesignated	<u>403,540</u>	<u>349,219</u>
	1,040,962	986,641
Temporarily restricted	<u>1,763,627</u>	<u>1,878,441</u>
Total net assets	<u>2,804,589</u>	<u>2,865,082</u>
TOTAL LIABILITIES AND NET ASSETS	<u>\$ 2,842,272</u>	<u>\$ 2,899,154</u>

An audit of Monadnock United Way's financial statements is conducted annually by the certified public accounting firm of Oster & Wheeler, PC. Copies of the latest audited report are available from Monadnock United Way.

WHERE DOES MY MONEY GO?



GIVING BY CATEGORY



49

FUNDED PROGRAMS

26

PARTNER AGENCIES

36

COMMUNITIES SERVED

CHESHIRE COUNTY

Alstead
 Chesterfield/Spofford
 Dublin
 Fitzwilliam
 Gilsom
 Harrisville
 Hinsdale
 Jaffrey
 Keene
 Marlborough
 Marlow
 Nelson
 Richmond
 Rindge
 Roxbury
 Stoddard
 Sullivan
 Surry
 Swanzey
 Troy
 Walpole
 Westmoreland
 Winchester

HILLSBOROUGH COUNTY

Antrim
 Bennington
 Frankestown
 Greenfield
 Greenville
 Hancock
 Hillsboro
 Deering
 Mason
 New Ipswich
 Peterborough
 Sharon
 Temple

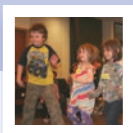
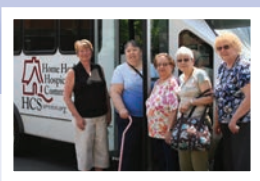
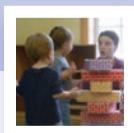
Based on 2015 funding year.

DO YOU EVER **WONDER**

ABOUT ALL **WE CAN DO?**

Good things can happen
because of me... and **YOU!**

Throughout this GREAT REGION
there are Programs out there,
that strive to help others;
there are People who CARE.



You too can help a Program
with a need THIS YEAR.

You can **Give... Advocate...**
or even **Volunteer.**

There's no need to WONDER
about the GOOD we can do;
we'll all make it happen
yes **ME** and **YOU** too!

WONDER...



AGENCIES AND PROGRAMS RECEIVING FUNDING IN 2015

Big Brothers Big Sisters of Western NH

352-9536 • bbbswnh.org

Volunteer screening, training and mentor matching for children who are at risk and face adversity.

Cheshire Housing Trust

57-7603 • cheshirehousingtrust.org

Counseling and resident support on a wide range of housing issues to help lower-income individuals and families to obtain and maintain their housing.

The Community Kitchen

352-3200 • thecommunitykitchen.org

Take home food boxes, cooking, budgeting classes, nutritional education, and advocacy for low- to moderate-income individuals and families.

Contoocook Valley Transportation Company (CVTC)

877-428-2882 ext. 5 • cvtc-nh.org

Rides to medical appointments and other needed destinations for seniors and people with disabilities.

Home Healthcare Hospice & Community Services (HCS)

800-541-4145 • 352-2253 • HCSservices.org

Castle Center Life Enrichment Day Program: Provides a caring, supervised environment to promote the independence and quality of life for adults with complex health conditions as well as those who just need a little support.

Friendly Bus: Specialized, assisted door-to-door transportation services for the elderly and adults with disabilities in Keene and the surrounding communities.

Maternal Child Health Program: Providing support and education to pregnant women and parenting families who are experiencing the stressors of poverty, social isolation, and other psychosocial issues.

Meals on Wheels: Daily safety check and delivery of a hot, nutritious meal to homebound elderly and disabled adults.

Hundred Nights

352-5197 • hundrednightsinc.org

Cold Weather Shelter: Emergency shelter on the 100 potentially coldest nights of the year.

Open Doors Resource Center: Daily space that provides the homeless population with access to a phone/fax, computer, AIDS education and testing, washer and dryer, food, mail-drop location, nutritionist, and GED prep.

Be Well Clinic: Collaboration between Hundred Nights and Dartmouth-Hitchcock Keene for a once-a-week free clinic at the Hundred Nights Shelter.

Keene Day Care Center

352-2129 • keenedaycarecenter.org

Childcare scholarships for children from low- to moderate-income families to access educational and developmental services.

Keene Senior Center

352-5037 • thekeeneseniorcenter.org

Fitness programs, activities and events for social interaction, financial information services, and educational opportunities for people over 50 in the Monadnock Region.

MAPS Counseling Services

355-2244 or 924-2240 • mapsnh.org

Chronic Pain and Cancer: Support groups for individuals and their families/caretakers living with cancer and chronic pain.

Client Fund: Counseling services for low- to moderate-income individuals and families that are uninsured or under-insured.

The Mayhew Program

744-6131 • mayhew.org

Tuition-free residential summer experience and regular school mentoring for at-risk boys.

Monadnock Area Peer Support Agency

352-5093 • monadnockpsa.org

Peer run support/recovery for adults in need of mental health services. Nightly telephone call-in support through the Warm Line.

Monadnock Center for Violence Prevention

352-3782, 209-4015, or 888-511-MCVP

MCVPprevention.org

MCVP-Child Sexual Abuse Prevention: Training for early learning educators, child care professionals, and parents.

MCVP-Healthy Relationships Workshop & Teen Dating Violence Prevention: Workshop for teens and teens to develop skills to build healthy relationships. Introduce early warning signs of abusive behavior and familiarize students with local and national resources.

MCVP-Shelter: Emergency shelter for women and children fleeing domestic violence, sexual violence, and stalking. Provides weekly education and self-improvement sessions for residents.

Monadnock Community Early Learning Center

532-6021 • mcelc.org

Scholarships for quality childcare and educational opportunities for young children and their families who meet income guidelines.

Monadnock Developmental Services, Partners in Health Program

352-1304 • mds-nh.org

Respite and family coordination services for families who have children birth to 21 years with a diagnosed chronic health condition.

Monadnock Family Services

357-4400 • mfs.org

ActingOut • 357-4400 • actingoutimprov.org:

Improvational theatre program for middle and high school students to cultivate resiliency, healthy development, and social skills.

Acute Services • 357-4400 or 924-7236: 24/7 assessment, support, diagnosis, and referrals for urgent mental health care.

All R Kids (ARK) Supervised Visitation Center • 357-4661: Provides a safe, neutral environment for court ordered supervised visitation.

Family Time Early Intervention and Prevention Program •

357-4400: Provides trained-educators to visit families and children at risk. Supports parents as effective advocates for their families' needs.

Monadnock RSVP Volunteer Center
357-6893 or 924-7350 • MonadnockVolunteerCenter.org: Mobilizes the skills and talents of seniors in meeting the needs of nonprofit agencies, public institutions, and local programs.

Monadnock Adult Care Center • 532-2427: Structured programming, transportation, and access to on-site medical services for adults who need medical and/or other forms of professional supervision during weekdays.

Monadnock Substance Abuse Services • 357-4400: Outpatient evaluation, treatment, education, prevention, and outreach for adolescents and adults.

Monadnock Worksource
924-3326 • monadnockworksource.org

Provides the following for individuals with developmental disabilities: vocational training, job site development, job coaching, and the creation/support of paid employment and volunteer opportunities.

NH Legal Assistance
800-562-3994 • nhla.org

Free civil legal services related to housing, income and health care benefits, domestic violence relief, elder rights, and exploitation of low-income individuals and the elderly.

NH Pro Bono Referral System
800-639-5290 • nhbar.org

Coordinates and leverages the free legal services of volunteer attorneys to help meet the basic legal needs of low-income families and individuals.

The Orchard School & Community Center • 835-2495 • theorchardschool.org

Early Education Child Care: Tuition assistance for income-eligible families for high quality childcare for children ages 2-6.

Open Doors, School Age After Care and Vacation Camps: Outdoor and indoor learning opportunities that are designed to require careful listening, teamwork, and a sense of personal responsibility. Runs after-school and for full days during school vacations.

Summer Day Camps: Culturally and artistically rich farm-and-forest based programming for students 6-16 years old.

Rise for baby and family
357-1395 • riseforbabyandfamily.org

Early identification, intervention, family centered support, advocacy, and inclusive play groups for infants and toddlers birth to three years of age who are exhibiting a developmental delay or disability.

The River Center: Family and Community Resource Center
924-6800 • rivercenter.us

Early Home Support: Bimonthly home visits, assessment, transportation, support, and education for prenatal babies through their first birthday and beyond.

Employment Resource Center: Coaching and group workshops for job search techniques, interviewing skills, resume preparation, and completing online or print job applications.

Parenting Programs: Family support programs, parenting workshops, and focus groups.

The Samaritans, Inc.
357-5510 • samaritansnh.org

Provides suicide prevention, intervention, and post-vention services through support groups, a 24/7 anonymous and confidential hotline, community education, and outreach.

Southern New Hampshire Services
800-322-1073 • snhs.org

Hillsboro Child Development Center • 464-3136: A child development program that provides tuition scholarships for accessible comprehensive services for children and families in need in the Greater Hillsboro area.

Western Hillsborough County Family Support Program • 924-9601: After-school and summer programming at both the Riverview and Prescott Hill Apartment complexes in Peterborough, and family services in Western Hillsborough County.

Southwestern Community Services (SCS)
352-7512 • SCShelps.org

Fuel Assistance Program: Fuel assistance to income-eligible households in Cheshire County.

Housing Stabilization Services: Provides emergency homeless shelter, housing stabilization, and homeless prevention services for individuals or families who are homeless or at imminent risk of becoming homeless.

New Hope New Horizons: Provides employment, daycare, outreach, and community residential support for adults who have a developmental or an acquired disability.

Weatherization Assistance Programs: Installation of energy efficiency improvements for low-income families.

Women, Infants, and Children (WIC): Provides no-cost supplemental food, health care referrals, and nutritional education to the income eligible pregnant women and families with children up to age 5.

Walpole Village School
756-4246 • www.walpolevillageschool.org

Tuition assistance for preschool, kindergarten, and before/ afterschool care for children of families who meet income guidelines.

The Winchester Learning Center
239-7347 • winchesterlearningcenter.org

Tuition assistance for early child care and pre-school for children whose families meet income guidelines.

SPIRIT OF MONADNOCK

2014-2015

FENTON FAMILY DEALERSHIPS

The **SPiRiT OF MONADNOCK** award is the highest honor Monadnock United Way presents each year—reserved for the organization and its employees who best exemplify the spirit of our region through continued, wide reaching support for the community and Monadnock United Way.



Pictured above are representatives from **Fenton Family Dealerships**, the 2014-2015 Spirit of Monadnock recipient. From left to right: Bill Fenton, President; Penny Bell, Human Resource Manager; and Bob Swartz, CEO.

(Photo by Al Karevy Photography)

Bob Swartz, CEO of Fenton Family Dealerships accepts the Spirit of Monadnock award from John Round at the 2014-15 Campaign Recognition event.

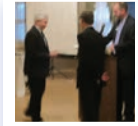
CIRCLE OF EXCELLENCE

2014-2015

TRAILBLAZER AWARD: Awarded to the employee group achieving the highest per capita giving in a first-year employee campaign.

ENTERPRISE AWARD: Awarded to the employee group conducting a campaign with an exceptional level of inspiration, creativity and enthusiasm.

SUMMIT AWARDS: Awarded in five employee groups (10 employees or less; 11-49 employees; 50-124 employees; 125-249 employees; and over 250 employees) for highest per capita giving in an established employee campaign.



2014-15 MONADNOCK UNITED WAY CIRCLE OF EXCELLENCE AWARDS.

Top row, left to right: Trailblazer Award: **S&S Painting**; Enterprise Award: **Harrisville Designs**.

Bottom row, left to right: Summit Award (10 employees or less): **The New Hampshire Trust Company**; Summit Award (11-49 employees): **IPG Employee Benefits**; Bottom row, left to right: Summit Award (50-124 employees): **Savings Bank of Walpole**; Summit Award (125-249 employees): **ES3, LLC**; and Summit Award (250 or more employees): **Markem-Imaje**.

LEADERSHIP GIVERS

2015 GRAND MONADNOCK RAPELLING TEAM

Leadership Giving... is for those whose generosity reflects an extraordinary concern for our community and the needs of the people who call the Monadnock Region home.

As Leadership Givers, you are the foundation of Monadnock United Way's success. You have taken the lead and have helped blaze the trail for others in our community to follow.

The Monadnock United Way Leadership Giving Program was established in 1985 to recognize those individuals whose annual contribution displays leadership in support of the human service needs of our community.

Thank You!

VENTURERS

Contribution Level: \$500-\$749

You have arrived at the point where you begin to care more for others than for yourself. You are ready to take the rope and venture down the trail only a few special people ever take.

Douglas Adolphson
Maureen Ahern & William J. Knorr
Janet J. Albarado
Robert Allen
Frank Almeida
Catherine M. Anatone
Chuck & Liz Anderson
Michael J. August
Thomas L. & Ann B. Baird
Jan M. Bakalar
Marcia & Tom Barrett
Becky Barrett
Kevin R. Beal
Joseph Becker
Cheryl Belair & Stephen Bragdon
Deanne M. Belanger
Mr. & Mrs. Jason Bemis
Douglas & Kim Benedict
Ann & David Benjamin
Juliana Bergeron
Robert C. Birmingham
Todd Bissell
Andrew S. Bohannon
Raymond & Kathleen Bollerud
The Bomba-Hood Family
Sharon Bosely
Johnnie W. Britton
Elisabeth Brown
Stephen Brynn &
Rachael Champagne-Brynn
Frank & Janet Buckbee
Christine Burke
John L. Byrnes
Frank T. Cackowski
Gerald D. Cahoon, Jr.
Joseph Callahan
Maria Carbone
John E. & Margaret A. Carlson
Don Caruso & Nancy Johnson
Mr. & Mrs. Louis Castriotta
Janet & Bruce Chamberlin
Michael Chenoweth
Dr. James C. Chesebrough
Eugene M. Cleary

Lisa E. Clouet
Brian Cody
Christopher R. Comier
Terry Contas
Joni M. Cormier
Jim & Shelley Craiglow
Carolyn Crane & Eileen Fernandes
Angela Criswell
Jonathan H. Cryer
Alison Cuomo-Nason
Sharyn K. & Glenn P. D'Eon
Susan M. DeGrosky
Gregory F. DeMinico
Terra Descoteaux
Clark & Joanne Dexter
Julie Dickson & Jay Smeltz
Bob Dignitti
John F. Dinkel Jr.
Bill & Kris Dow
Jane G. Dreissig
Sean Drower, DMD
Marc Ducharme
Barbara Duckett & John McPeake
Jack & Deb Dugan
Gerald Eichner
Linda D. Elkind
Jim & Sue Ells
Donald Emery
Pamela Erdmann
Donald & Gayla Eva
John F. Fanning
Alona Florenz
Natalie Ford
Jean M. Fowler
Elizabeth Fox
Meg Freeman
Ed & Micci Freyenhagen
Thomas Friend
Robert Fuerderer
Matthew T. Gaffney
Laura Gingras & David Fish
Ken & Lorraine Goebel
Gina & Rory Goff
Peter & Connie Gosline

Mahesh Goswami
David S. Gray
Todd & Karen Gray
Joseph & Tina Greathouse
Doug & Julie Green
Scott & Andrea Greene
Peter Griesbach
Tammy J. Griffin
Stephen Gryczka
Dr. & Mrs. Michael Guberman
Dayna M. Guldhauge
Amanda M. Guthorn
Dale & Shannon Guyer
Daniel Hader
Daniel J. Haight
Jim & Nancy Hall
Christopher Hamblet
Barbara Hamel
Deborah & Greg Hansen
Mr. & Mrs. Joseph S. Hart
Patty L. Hatch
Mark & Michelle Hayward
Beth Healy & Jack Calhoun
Mr. & Mrs. Bryan W. Hebert
Maidli & Robert Hill
Thomas Hinz
Kenneth Hoppner
Mr. & Mrs. Abraham Howe
Phil & Judy Hueber
John & Joanne Jantson
Dan & Jori Johnson
Margaret Johnson
Jay & Cheryl Kahn
Michael & Lynne Keating
Ms. Joan Kibbe & Mr. Richard Scaramelli
Alexandra Killgren
Pam & Hank Knight
Nancy Kowalski
Ted Kuchinski
Wayne E. Lacoste
Scott C. Lambert
Daniel J. Langille
Karen Langley
Gordon & Marcia Leversee

VENTURERS (continued)

Todd & Jill Lewis
Patricia Little
Randall R. Long & Karen A. Cateleso
John Longo
Benjamin Lordeau
Vicki Loughery
John & Susan Lowry
Bill Lynch
Michael & Sarah MacDonald
Jeff & Ruth MacMurray
Lewis & Mary Major
Susie & Jim Margraf
Chris Marseilles
Marianne Marsh, MD
Tom & Sue Masiello
The Mattern Family
Jason McLean
Sunny McPherson
Leila & Joshua Meehan
Dawn & Andrew Merrill
Diane & Michael Metell
Kyle Michaud
David D. Miller
Todd H. Miller
Alison Mills-Johnson
George Minor
Kerry A. Mogan
Pegg Monahan
Angela & Jody Mooney
Madelyn & Nick Townmail
Melinda Mosier
James E. Mountford
David C. Mousette
Anne & Bill Moyle
John F. Mullett, Jr.
Millie G. Murgida
The Mutuski Family
Emily Nardello
Karen Nickerson
Edward C. O'Brien
Mark & Jessica O'Brien
Mary H. O'Donnell
Dr. Marika Ostroski
Theodore H. & Ruth D. Parent
Derek Paul
Ryan R. Paul
Dominic Perkins & Deirdre Chretien
Judy & Bob Perry
Mrs. Walter Peterson
Sandie Phipps & Tom Casey
Holly A. Piccirillo
Charles D. & Carlotta L. Pini
Andrea J. Plaskiewicz
Julie, Rich & Sam Pratt
Dean R. Priebe
Matt Prigge

Judith Pulzel
Bernadette Quinn
Peter Race
The Rameys
Richard Randall
Dan & Louise Rath
Donald E. Ray Jr.
John Renaud
Katherine & Patrick Richardson
Kevin Ridings
Peter Rooney
Anthony Rosinski
Bob & Mary Jane Rountree
Kellie J. Royce
James Royer
Catherine Runyon
John & Valerie Santos
Paul W. Scheuring
Jeffrey Scott
George Scott, Jr.
Eleanor & Charles Shaw
Mary E. Shepardson
Aneek Shoemaker
Lucy Shonk
Susan Silver
Marni Silverstein & Michael Davern
Lynn & Arthur Simington
Sean Singleton
Cory J. Smith
Jeffrey L. Smith
Joy A. Smith
Elveene & Steven Smith
Suzanne Stevens & Tom Minard
Cindy Rodenhauer Stewart &
Tom Stewart
Junius Spivey
William & Katherine Stahl
Jeffrey Steinberg
Kelly Steiner
Bill Stevens
James Stitham
Ryan E. Sylvester
Stacy Lee Taylor
Jon & Kathy Thatcher
Robert J. Theall
John & Claire Therriault
Hope P. Therrien
Jonas & Claudia Thisner
George Thompson
Karen M. Titus
Marc Toyloy
Becky L. Trudelle
Nancy L. Turgeon
Penelope R. Vaine
Jan Walker
Cynthia J. Wall

Contribution Level: \$500-\$749

Leah Walsh
Sarah S. Webb
Peter Welnak
Bill Whyte & Katie Schwerin
Samantha & Stefan Wilhelm
Jeanne L. Williams
Douglass C. Wilson, DMD
Peg & Tony Wright
Philp Wyzik
Benjamin F. Zaehring
John Zimardo

Fifty-seven members wish to remain anonymous.

LEADERSHIP GIVERS

2015 GRAND MONADNOCK RAPELLING TEAM

LEAP LEADERS

Contribution Level: \$750-\$999

You are already on your way. You have taken the big leap and shown your commitment to helping others have a better life. As a result, you have become a true leader, setting an example for others to follow.

Larry & Gisela Antonuk
Mr. & Mrs. William C. Arthur
Frances Benton & David Nallett
Shelly & Jeff Bergeron
Patrick D. Bischof
Robert Brown
Edward & Kathleen Kennedy Burke
Rand & Jayne Burnett
Mike Chamberlin
Tom & Rose Chase
Kathleen Chertok & Peter Bonneau
Mark & Pepi Christopherson
Andrew Crawford
Gary R. Custer
Lew & Laurie Berby
Nora & Chuck Dissinger
Frank Dobisky & Cherryl Jensen
Dr. Marie Christine Duggan
Lisa Edwards
Jim Ganley
Michael & Donna Hanley

Alex Henkel & Heather Bell
Carl & Ruth Jacobs
Peter & Cornelia Jenness
Ockle Johnson & Chris Hrynowski
Marcia & James Kania
Pam & Gary Kinyon
David LaCoste & Patricia Campbell
Scott & Kelly LaFalam
Charles & Carolyn Loos
Mark D. McStravick
Brenda M. Middleton
Larry & Mary Milliron
Agnes A. Miner
Mary Day Mordecai & Ned Hulbert
David & Donna Morse
Scott Ogden
Bill & Kirsten Prigge
Mark Rountree
Gary & Jane Shapiro
Bill & Norma Slanetz
Kylie & Ken Swymer, Jr.

Christopher T. Tacy
Andrew & Suzanne Tremblay
Nancy & Paul Vincent
Brent Vitters
Chakradhar Voleti
Robert & Mary Walker
Susan L. Wells
Mark & Terri Whippie
David E. White
Emily Becker Whyte
Liane Wiley
Nicholas Williams
Terrence Williams
Dr. & Mrs. Donald V. Wilson
Dianne Wright
Jason E. Wyman

Thirteen members wish to remain anonymous.

CLIFF HANGERS

Contribution Level: \$1,000-\$1,499

You have pushed yourself off the cliff where others so often hang back. You are not satisfied with taking the easy way down. You realize that only by letting loose and falling into action can you make a difference.

Mr. & Mrs. William & Margot Abbott
Alan S. Amos
Susan Ashworth
Dr. Mary Catherine Bateson
Christina Bennett
Mike & Kathy Blair
Kürt Blomquist
Judith Bosies
Paul & Dot Bothwell
Sam & Lucy Bradley
Joseph & Michelle Briggs
Sally Brown
Dave & Nancy Callender
Dennis D. Chaples
Mike & Kathy Chelstowski
Anthony Chicarelli
Sue Chollet
Rick & Jan Cohen
Cathy Conkling & Richard Meyer
Suzanne & Paul Cooper
Kevin A. Cormier
David & Claire Costin
Cindi & Rich Coughlin
Mark E. Criswell
Warren & Kathi Davis
Carl & Barbara DeMatteo
Mrs. William H. Dennison

Jessica M. Dupuy
Robert & Alfreda Englund
Dick & Judy Fernald
Deirdre Forte
Lee & Cathy Garner
Charles & SallyAnne Goodale
Francoise Gooding
Michael & Betsy Gordon
Bryan T. Granger
Dr. Sherry & Robert Guardiano
Kathy Haltspring
Tom & Elke Hanna
Parker & Sally Hansel
Kathy Harrington
Judith M. Hildebrandt
David J. Hogan, Jr.
Robin & Shelley Hulbert
Wes & Kristin Humphrey
Lynda & John Hunt
Dr. Anne E. Huot & Dr. Joanne M. Cepelak
René & Ann Isaac
Carroll Johnson
Ken & Carol Jue
Gregory Kasprzak
Mike & Anne Keating
Risa & Douglas Keene

Joy & Jim Koontz
Bonnie M. Kurylo
Martha M. Landry
Nora G. Larsen
Marcia R. Legru
Thomas & Carolyn Lentocho
Jane Lescynski
Paula & Scott Leslie
John & Phylis Manning
Donald M. Mazanowski
Craig & Sylvia McBeth
Gregory & Susan McConahey
Tom & Karen McDonough
Jack & Paula McQuillan
Tom & Heather Minkler
Mary Ellen Moore
Linda Cates & Thomas Murray
Susan & Jeffrey Newcomer
Arthur & Patricia Nichols
Liz & Richard Ober
Diane A. Palmer
Jay & Sue Pattapiece
Leslie & Jane Pitts
Charles F. Post & Anna E. Zengel
Reinette & Brian Reilly
Michael Remy
James Reznicek

CLIFF HANGERS (continued)

Betty Ripley
James & Ann Robinson
Crystal & Keith Rokes
Bob & Mary Rooney
Jeff & Linda Rubin
Lynne & Lynn Rust
Eileen Sarson
Connie & John Schlegelmilch
Lael & Chris Schwabe
Gregory & Patti Seymour
Richard & Judy Skeels
Samantha Skove
Cathy Sorenson
Don & Nancy Sporborg
David & Jane Stabler
Nat & Sharon Stout
Rodney & Jill Stubbs
Chris & Joanne Sullivan
Maria & Kimball Temple
Greg & Julie Tewksbury
John L. Thornton
Ed Tomey & Maich Gardner
Beth Truman
Michelle A. Urban & George Ruppel

Astrid & Todd Warden
Amanda Whalen
Benjamin J. Wheeler
Ronald M. Wright
John & Louise Young

Twenty-four members wish to remain anonymous.

Contribution Level: \$1,000-\$1,499

TRAIL BLAZERS

Only after the passage of many feet does a trail become easy to follow. Someone has to be the first to blaze that trail. Though the path is not always clear, you are willing to negotiate the obstacles and find a way to the bottom.

Dorothy R. Arwe
Rick & Betsey Church
Scott T. Clarke
Christine & Scott Curtis
Kate & Lee Dexter
Dick & Pat Dugger
Stan & Cheri Fry
Carolyn & Martin Geheran
Carl J. Gravina
Jody Halliday & Bill Kowalczyk
Megan Burke Kidder
Mike & Sue Kowalczyk
Charles & Marcia Krause
Jane & Steven Larmon
Douglas Lehr
Ann & Paul Looney
John A. MacLean
Dennis & Kathryn Mead
Tom & Carol Newcombe
Victor & Jen Pepin
Ann & Roy Piper
Suelaine Poling & Bruce Myrick
Michael Rafferty
Joji Robertson
Bruce & Alice Rokes, Jr.

Alan & Melissa Stroshine
Lisa & David Therrien
John Walter & Sandra Van de Kauter
Leonard L. Weldon, DDS
Edward & Jean Wright
Patricia B. Wright
Story & Thomas Wright

Five members wish to remain anonymous.

Contribution Level: \$1,500-\$1,999

LEADERSHIP GIVERS

2015 GRAND MONADNOCK RAPELLING TEAM

GREAT DESCENDERS

Contribution Level: \$2,000-\$4,999

Your determination and commitment have paid off! You have nimbly negotiated obstacles that few have ever overcome. Now you can encourage others along the way to increase the quality of life for everyone in our community.

Joan & Stephen Ames
Dollie E. Ash
Daniel & Elizabeth Baker
Ellis Barrett
Jill Batty & Daryl Stutes
Dan & Nancy Belluscio
David & Patricia Blake
Don & Jill Brehm
Eleanor Briggs
Tim & Kathryn DeFreitas
Georgios Dramalis
Lewis Feldstein
Willard Goodwin & Barbara Summers
Matt & Cindy Gultinan
Jennifer M. Hanrahan
Bridget & Peter Hansel
Nancy & Roger Hansen
Beverly & Robert Harris
Kenneth Hathaway
Thomas & Anne Havill
Linda Heimerdinger & Wink Faulkner
John & Kate Hoffman
Mr. & Mrs. David E. Howe
Sandy Hunt & Kerry Ulrich
Carl B. Jacobs, Sr.
David & Lori Jankowski
Jennifer & Gerard Kiernan
Richard & Sharon Larson
Michael Matros

Douglas Maynard
Martha & Cole Mills
Bob & Margie Palmer
Bud & Bea Record
Wallace Reney
Walter & Ginny Rohr
Bob & Cheryl Rooney
John Round
Anna Ruelle & David Chase
Mary Sherwin
Craig Stockwell & Sarah Mustin
Roger & Ann Sweet
Jeff Tawney & Melissa Dec
Cameron Tease & Dixie Gurian
Leonard Tichy
Mark Verdi
Guillermo & Leydi Walle
Bob & Connie Walsh
Christopher W. Wightman
Mildred Wolfe
Timothy W. Wood
Joseph & Lorraine Youngs

Eleven members wish to remain anonymous.

RAPPELLMASTER

Contribution Level: \$5,000-\$9,999

You've mastered the mountain and by doing so have shown others what is possible by following your lead. Rappelling is a serious sport and human needs are a serious subject. In order to meet the growing needs of our community, leaders give first.

Ashok M. Bahl
Bill & Kathy Baldasaro
Betty & Mike Christiansen
Hal & Margot Close
Sue Doyle
Mr. & Mrs. Hugh M. Eaton, III
Gehlbach Family Fund
John & Nancy Hann
Nancy Hayden
Richard Hill
Mr. & Mrs. John A. Hubbard
The Kriebel Family
Charles Montgomery
Talu & Timothy Robertson

One member wishes to remain anonymous.

THE ALEXIS DE TOCQUEVILLE SOCIETY

Contribution Level: \$10,000 and Above

Initiated by United Way of America in March of 1984, The Alexis de Tocqueville Society Major Giving and Recognition Program is designed to deepen the understanding, commitment and support of individuals to United Ways and to recognize their deep commitment to service. The name of the society was chosen because of de Tocqueville's admiration for the American spirit of voluntary association and voluntary effort for the community good.

Thank you to these individuals who have made such a commitment to our community.

Joe & Stephanie Baute
Bernice Clark
Kathleen & Mark Gross
Jean & John Hoffman
Bill & Janet Jackson
Jeffrey Miller & Carol MacKinnon
Jim & Judy Putnam

One member wishes to remain anonymous.



LEADERSHIP GIVERS

2015 GRAND MONADNOCK RAPELLING TEAM

TEAM MEMBERS WHO PREFER NOT TO BE LISTED BY GIVING CATEGORY:

Russell & Ronda Ball
Dean Beaman & Maureen Curtiss
Chris & Nancy Cogliandro
Debi & Jeff Coleman
Bill & Linda Elliott
Bob Gogolen & Beth Caldwell
Lois & Richard Haskins
Paul & Bethany Hebert
Vaughan & Martha Hennem
Heather Hill
Mr. & Mrs. William Houle, Sr.
Jim Janetos & Dale Pollack
Linda & Tad Lacey
Pete & Sharon Mangan
Joe Marks & Magie Cahoon
Laurie Meissner
Allen & Ellen Mendelson
Phyllis S. Meyers
Manzall Mitchell
Allyson Mount
Bob & Maryann Mucha
Jennie Norman & Bill Walker
Joe & Rosaleen Parisi
Chuck & Vanessa Prigge
Tom & Babs Putnam
Kevin & Susan Reilly
Kevin & Debra Robbins
Sharon & Jim Rousmaniere
Cathy Sorenson
Debra Stallings
Ken Stewart & Mary Lou Caffrey
Michael & Patricia Stoudt
Jim & Mary Suozzi
Richard Talbot
Marilyn & Ernie Yamartino

Eighteen members wish to remain anonymous.

NUMBER OF LEADERSHIP GIVERS WHO WORK AT THESE ORGANIZATIONS:

1911 Office, LLC	2	Mascoma Savings Bank (Connecticut River Bank)	2
AAA Travel Agency	1	Melanson Company	5
Ames Automotive Enterprises	4	Monadnock Community Hospital	12
AMETEK, Precitech Inc.	4	Monadnock Developmental Services	1
Antioch University New England	2	Monadnock Economic Development Corporation	1
BAE Systems Employee Fund	1	Monadnock Family Services	4
Baudelaire Soaps, Inc.	1	Monadnock Food Co-op	4
Benco Dental Supply	1	Monadnock Ledger-Transcript	1
Bequaert Old / Rainy Day Books	1	Monadnock Radio Group	2
Better Homes & Gardens Masiello Group Real Estate	2	Monadnock United Way	5
Bollerud-Holland Associates	1	The Mountain Corporation	1
Bradley & Faulkner, PC	3	NBT Bank of Manchester	2
C&S Wholesale Grocers, Inc	78	New Hampshire Ball Bearings	7
Carlisle Wide Plank Floors	1	New Hampshire Charitable Foundation	1
Cedarcrest Center for Children with Disabilities	1	The New Hampshire Trust Company	3
Cheshire County Employees	1	NGM Insurance Company	7
Cheshire Medical Center/Dartmouth-Hitchcock Keene	55	NH Automobile Dealers Association	1
Cheshire Oil Company	5	NH State Employee Campaign	1
City of Keene	27	Oster & Wheeler PC	1
Clark-Mortenson Agency Inc	2	PC Connection Inc	1
Community Development Finance Authority	1	People's United Bank	4
Corning Specialty Materials	7	Phoenix House	1
Crockett Homes of Central NE	1	Pilgrim Pines Conference Center	1
DD Bean & Sons Co.	2	R. J. DiLuzio Ambulance Service, LLC	1
Douglas Company Inc	4	Rise for baby and family	1
Eastern Bank	1	Riverbend Community Mental Health	1
Edward Jones - Allen Mendelson	2	Road's End Farm	1
EMF Inc.	2	Robert M. Mucha & Associates	1
Entergy Vermont Yankee	1	Rountree Ford Lincoln LLC	3
ESS, LLC	10	SAN Group/Alliance Holdings	2
Eversource/PSNH	8	SAU 29 Administration/Schools/Retirees	11
EVS Metal-New Hampshire	1	SAU 34 - Hillsboro Elementary School	1
F.H. Hamblet, LLC	1	SAU 93 Monadnock Regional Middle/High School	1
Fenton Family Dealerships	6	Savings Bank of Walpole	4
Filtrine Manufacturing Company	1	Servpro of Keene	3
Granite State Children's Alliance	1	Southwestern Community Services, Inc.	6
Granite United Way	2	St. Paul's School Staff & Faculty	1
Hamshaw Lumber Inc	1	State of New Hampshire	2
Hannaford - Keene	1	Symbotic	2
Harbor Light Capital Partners	1	Symquest	1
Home Health Care Hospice and Community Services	8	TD Bank Monadnock Region	2
Hypertherm	1	Theodore H Parent, Attorney, PC office staff	1
The Insurance Source	1	The Timken Company	24
IPG Employee Benefits	3	Turmoil Manufacturing Co.	1
Janos Technology, LLC	1	UNFI	3
Keating Plumbing & Heating, Inc.	1	United Way of Greater Nashua	1
Keene Day Care Center, Inc	1	UPS	6
Keene Housing	2	Vision Financial Corporation	2
The Keene Sentinel	3	W. S. Badger Company, Inc.	4
Keene State College	26	Walpole Veterinary Hospital	1
Kennedy Information, LLC	2	Wells Fargo Advisors	2
Liberty Mutual Insurance	33	Whitney Brothers	2
Lynn C. Rust, CPA PC	1	Wilson Orthodontics	1
MacMillin - A DEW Company	2	Yankee Publishing Inc.	1
Markem-Imaje	55		

ENDOWMENT PROGRAM

A GIFT TO OUR COMMUNITY THAT WILL ENDURE FOR GENERATIONS

In thirty or forty years we can be fairly confident that area towns will still have their beautiful village greens, Mt. Monadnock will appear majestically from the morning mist, the lilacs will bloom in the spring and maple trees will turn the hills brilliant colors every fall.

But what about the people? Will our children have the opportunity for quality beginnings? Will emergency food and shelter be available for those who need it?

Will the handicapped have access to special training? Will our elderly still have the care and support that make such a difference in their lives? Will those in crisis still receive counsel and support?

The **Monadnock United Way Endowment** is a permanent commitment ensuring that as long as there are people in the Monadnock Region who need help, it will be available. *Always.*

ENDOWMENT DONORS

Thank you to these donors, past and present, who have made a gift that will endure for generations.

Carrie Anderson
Dorothy Robertson Arwe
Michael & Joan Bardin
Joe & Stephanie Baute
Paul Bettinger, MD
Windsor Brooks
Muriel Burbank
John G. Burk
John C. Calhoun, Jr. &
Helen W. Livingston

Bernice Clark
Randy & Janet Clauser
Michael Cole
Richard Conner
David & Claire Costin
Thomas Cross
Susan DeMars
Dover Corp., Employee Fund
Dover Engineers Systems
Dover Fluids
Donald D. Davis
Mary Delisle & George Foskett
Frank Dobisky
Peter & Susan Doyle
Richard & Patricia Dugger
Francis F. Faulkner
Andy & Amy Fincher
Sym & Molly Goodnow
Dixie Gurian
Brian & Anne Hall
Nancy Halpin
Philip M. Hamblet
Persis Hamilton
George R. & Shirley G. Hanna
Nancy Hayden
Richard E. Hill
John & Jean Hoffman
Richard & Altha Holbrook
Martha Hongisto
Oliver J. Hubbard
Wentworth Hubbard
Carl Bearse & Ann Faulkner Jacobs

Ken & Carol Jue
Mr. & Mrs. James Koontz
Kycocera Ceramics Corp.
David & Martha Landry
Mr. & Mrs. Drew Landry
Molly B. Lane
Charles & Carolyn Loos
Paul & Teresa Ludwig
Christopher Mapes
Doug Maynard
Sally Maynard
Craig & Sylvia McBeth
David McCullough
Allen Mendelson
Maureen G. Minarcik
Karen & James Nickerson
Jennie L. Norman
Jim & Joan O'Neil
Franklin & Virginia Peart
Leslie & Jane Pitts
Craig & Brenda Platt
Michael & Mary Plaut
Albert Ricci
Robert B. Ritchie
Tim & Talu Robertson
Claude & Susan Routhier
William M. Scranton
Morton & Pauline Shea
Charles & Elizabeth Shook
Mr. & Mrs. William Smedley V
Katherine Snow & Paul Ledell
Don & Liz Spaulding
Nancy Spurborg
William Spurgeon, Jr.
Cindy Rodenhauer Stewart
Don Suh
Cameron Tease
Nancy Turgeon
William L. Van Syckel
Nancy Vincent
William C. Walker
Christine H. Weeks

David Westover
Tom & Story Wright
Dong Xu
Suanne Yglesias
Lorraine Youngs
Louise & Roger Zerba

SPECIAL FUNDS

GIFTS MADE BY MEMBERS OF OUR COMMUNITY **TO HONOR THE FOLLOWING:**

FOUNDERS FUND

Thank you to those who made gifts in honor of the following Founders of the Keene Community Chest.

Kenneth Arwe
Jane Bennett
Windsor Brooks
Philip H. Faulkner

John Goodnow
Franklin Peart
Michael Plaut
Michael Ricci

Ellis Robertson
Andrea Scranton
William Shea

MEMORIAL FUND

Thank you to those who made gifts during the past year in memory of the following who held the Monadnock United Way close to their hearts.

Frank and Trudy Curtiss
Ethel Flynn
George Gardella
Paul Jauregui

Allan Kendall
David Landry
William Moss
Sean Tease

Mary Truslow
Dennis Umscheid

LEGACY SOCIETY

Thank you to those who have established a planned gift for Monadnock United Way through their will or estate planning.

Windsor Brooks
Muriel Burbank
Donald D. Davis
Mary Delisle
Francis F. Faulkner
Laura Ann Gingras

John & Jean Hoffman
Carl Bearse & Ann Faulkner Jacobs
Doug Maynard
Sally Maynard
Allen & Ellen Mendelson
Michael & Mary Plaut

Mabel Ryder
William M. Scranton
Katherine Snow
Virginia Warfield

MONADNOCK UNITED WAY

BOARD, STAFF AND VOLUNTEERS

2014 BOARD OF DIRECTORS:

Joe Parisi, Chair
Jeff Bergeron, Secretary
Dominic Perkins, Treasurer
Ashok Bahl
Heather Bell
Patty Blake
Katie Gardella
Kathy Gross
Rob Harris
Dick Hill
Anne Huot
Ken Jue
Bonnie Kurylo
Joe Marks
Bill Stevens
Terry Williams

MONADNOCK UNITED WAY STAFF:

Kathy Harrington, President
Kelly Brigham-Steiner, Collective Impact Director
Cameron Tease, Resource Development Director
Katherine Richardson, Donor Relations Coordinator
Gary Custer, Marketing Manager
Marianne Anderson, Executive Assistant

VOLUNTEER SUPPORT:

Monadnock United Way would like to acknowledge and thank the hundreds of individuals who dedicate their time, talents, and energy to making a difference. Monadnock United Way is grateful for the value these volunteers provide for us and our community.

MONADNOCK UNITED WAY

2014-2015 CAMPAIGN SPONSORS

Many thanks to the sponsors who contributed to the success of our Campaign events throughout the year.

KICKOFF SPONSOR:



LEADERSHIP GIVER APPRECIATION RECEPTION SPONSOR:

HD Harrisville Designs

CHALLENGE GRANT SPONSORS:

C&S Wholesale Grocers
Electronic Imaging Materials
IPG Employee Benefits
The Mountain
True North Networks
Walier Chevrolet
Joe & Stephanie Baute
Dick & Kris Hill
John & Jean Hoffman

Jeff Miller & Carol McKinnon
Mike & Beth Newbold
Tom & Babs Putnam
John Round
Joe & Lorraine Youngs

Plus several additional donors
who wish to remain anonymous.

ANNUAL REPORT PRINTING SPONSOR:



*Printed with assistance of
C&S Wholesale Grocers in support of our community.*



Monadnock United Way

23 Center Street
Keene, New Hampshire 03431
603-352-4209
muw.org

Nonprofit Organization
US POSTAGE PAID
KEENE, NH
PERMIT NO. 76

RETURN SERVICE REQUESTED